

Public Presentation:  
Port of Vancouver USA  
Commission





# The Team



**President**  
Jennifer Baker  
jbaker@credc.org  
(360) 433-1009



**Chief Operating Officer**  
Larry Holt  
lholt@credc.org  
(360) 567-3180



**Dir. of Communications**  
Monica Santos-Pinacho  
msantos-pinacho@credc.org  
(360) 567-3181



**VP of Business Development**  
Clint Hendricks  
chendricks@credc.org  
(360) 850-9134



**Marketing & Events Mgr.**  
Samantha Codi Walker  
scodi@credc.org  
(360) 314-5516



**Fiscal Administrator**  
Kim Cheatley  
Kcheatley@credc.org  
(360) 694-5006



**Relationships & Strategy Mgr.**  
Marnie Farness  
mfarness@credc.org  
(360) 850-5724



Economic

Development

Plan

- Established a 20-year vision
- With a five-year implementation plan to achieve county-wide goals and objectives
- Engaged over 200 local partners during the nine-month planning process
- Aligns with regional plans

# Vision & Goals

Our vision is for Clark County to be recognized as one of the most inclusive, healthy, and amenity-rich communities in the country. As a result, and with a continued focus on growing a diverse base of community-minded employers, talent sees greater opportunity here than anywhere else in the country.



Expand Business



Support People



Create Place

Regional

Landscape



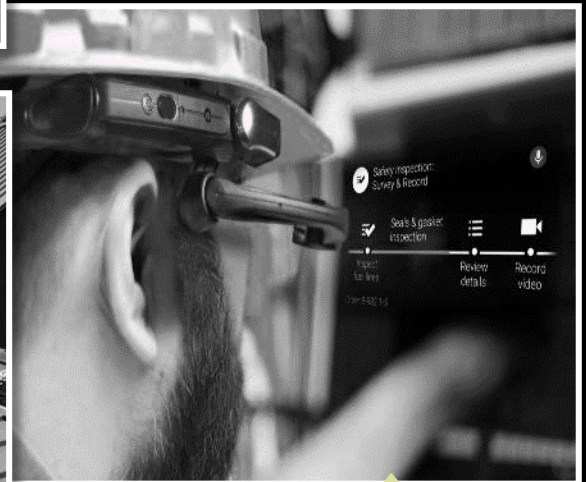
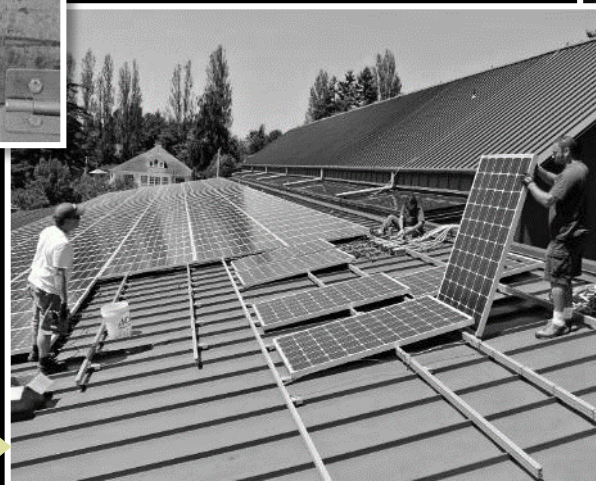
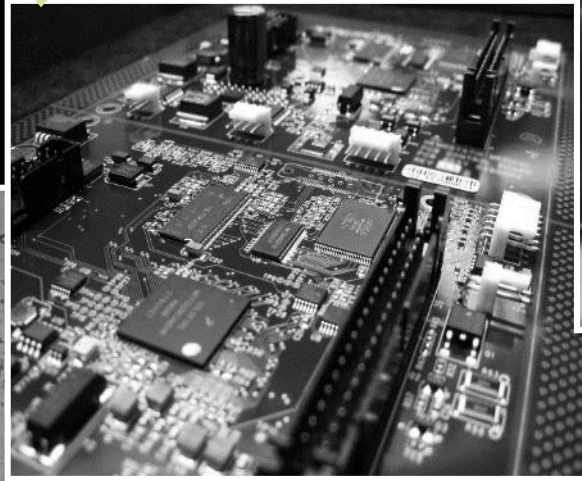


Strategic

Sectors

Computers &  
Electronics

Life Sciences



Metals &  
Machinery

Clean Tech

Software



# By the Numbers

4 | Wins

11 | Prospects

132 | Business Visits

908 | New Jobs Projected

\$114M | Capital Investment





Clark County Economic Development Plan  
Implementation  
& Next Steps





# Expand Business

- 1 Become Industry Experts  
→ Traded sector job growth
- 2 Strategically Market Industry Clusters  
→ Business investment
- 3 Build a Startup Ecosystem  
→ Support for new startups



# Support People

- 1 Foster Skills Development  
→ Increase wages and productivity
- 2 Prepare Youth for Economic Opportunity  
→ Career advancement for all
- 3 Launch a Brain Gain Initiative  
→ Attract more Young College Educated talent
- 4 Promote an Ethical & Just Society  
→ Commitment to inclusion, equity & Diversity





# Create Place



- 1 Empower Placemaking Strategies**  
→ Values-based, unique sense of place
- 2 Embrace Opportunity in Urban Center**  
→ Vibrant downtown benefits all
- 3 CREDC Tells the Story of Place**  
→ Talent chooses to live and work in Clark County
- 4 Make Employment Areas Shovel Ready**  
→ Businesses grow and expand in Clark County
- 5 Determine Regional Transportation Needs**  
→ Enhance transportation options & resiliency



Search and Select



Custom Area Select

Map Options

Clear Selected

Reset Map

About

Help & Feedback

Account

# Employment Lands

# Study Update

In partnership with the county-wide stakeholders, CREDC is leading the charge to update the existing employment land inventory (56 sites) identified in the 2016 Employment Lands Study to determine site-specific changes to development-readiness and enhance our ability to utilize and keep the data up-to-date.



# Funding Partners

Thank you for your investment!



NW Natural®



Q&A

The image features a stylized logo for 'Q&A' on a black background. The letter 'Q' is a large, light blue circle with a white arrow pointing to the right from its center. The ampersand '&' is white and positioned between the 'Q' and the 'A'. The letter 'A' is a large, light blue shape. To the right of the 'A', there is a white wavy pattern consisting of several curved lines.



Thank you!

For more information:

[info@credc.org](mailto:info@credc.org) | (360) 634-5006



Chairman's Circle investors:

