

Port of Vancouver USA

Board of Commissioners Meeting

JANUARY 14, 2020





Liam Roberts

Port of Vancouver, Economic Development Intern

Port of Vancouver - Youth Engagement Questionnaire and Survey

Hello, my name is Liam Roberts. I am a student at iTech, and this survey will be used for my internship project at the Port of Vancouver. If you have any additional comments and questions, feel free to email me: ljam.roberts001@gmail.com, and I will get back to you as soon as possible. Your input is very appreciated, thanks!

Q: Why take this survey?

A: At the Port of Vancouver, they realize the long-term importance and benefits that youth engagement has on the effects of our community. The Terminal 1 Waterfront Project is looking for ways to develop a stronger connection with the youth in the community. Your feedback will help them have a greater understanding of this topic.

To learn more about the Terminal 1 project, explore the home section of this website: <https://www.discoverterminal1.com/>

* Required

Email address *

Your email



Open Forum



Open Forum
Time Clock



Action Item E-1

Approve Port of Vancouver USA Board –
Election of Officers - 2020



Action Item E-2

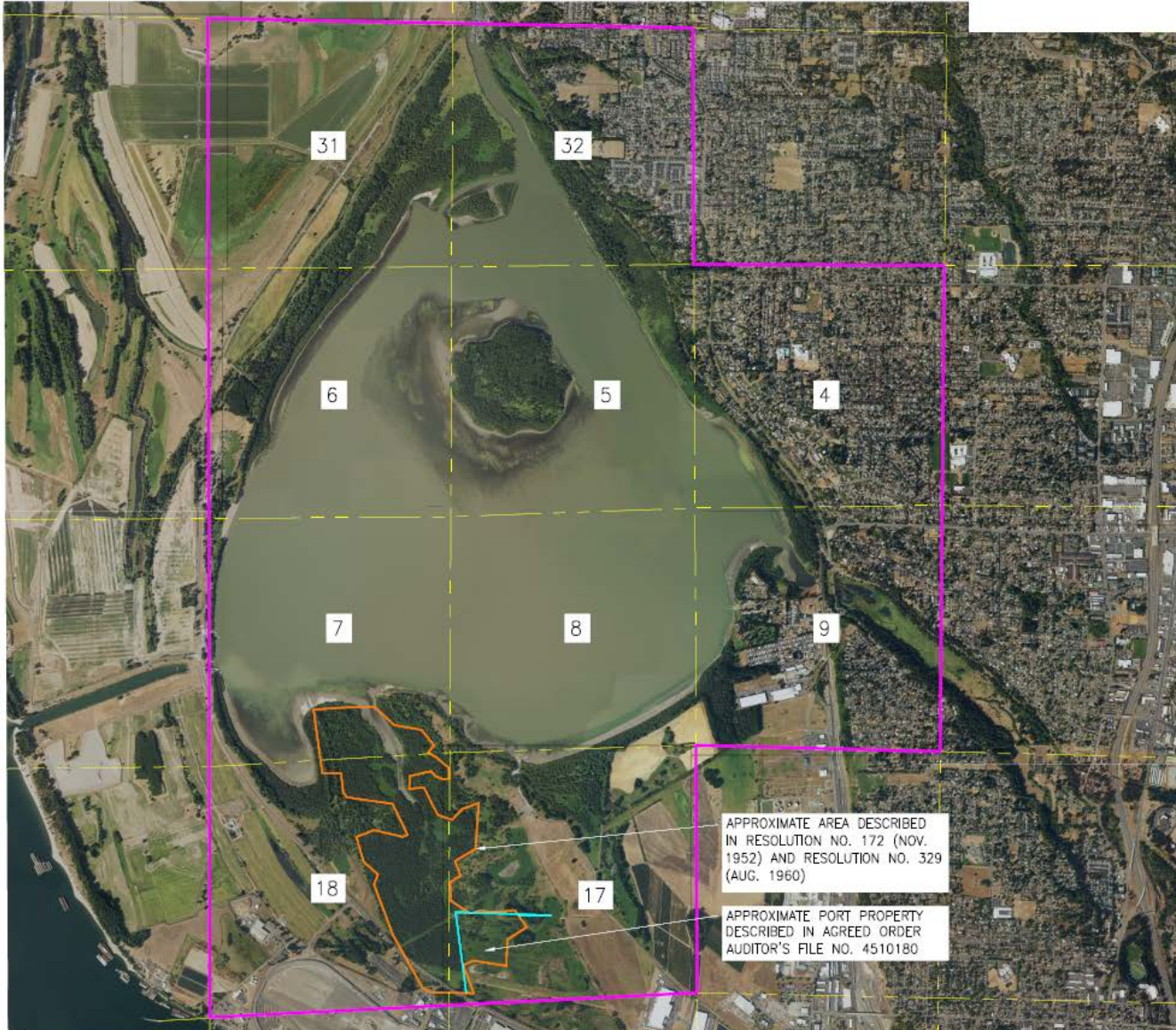
Approve Port Organizational Assignments -
2020



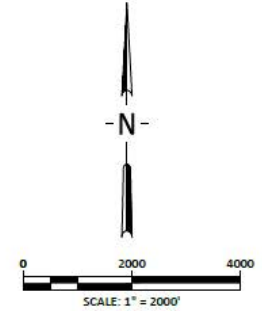
Action Item E-3

Approve Erickson Farm Properties
Tidelands Easement





VANCOUVER LAKE TIDELANDS
CITY OF VANCOUVER, CLARK COUNTY, WASHINGTON



1. AERIAL BACKGROUND IS FROM 2018 CLARK COUNTY PHOTOGRAPHY
2. SECTION LINES ARE APPROXIMATE, BASED ON LINES FROM CLARK COUNTY'S GIS WEBSITE (NOT SURVEYED)



MacKay + Spósito

ENERGY PUBLIC WORKS LAND DEVELOPMENT
www.mackaysposito.com

1325 SE TECH CENTER DRIVE, SUITE 140
VANCOUVER, WA 98683
VANCOUVER: (360) 695-3411
PORTLAND: (503) 289-6726
FAX (360) 695-0833

DATE:	2019-12-5
SCALE:	1"=2000'
DRAWN BY:	GAH
JOB NO.	15050
FILE:	VANCOUVER LAKE EXHIBIT_2019-12-5.DWG





Erickson Property on Vancouver Lake-Aerial



Legend

- Buildings and Structures
- Building Footprints
- Taxlots
- Cities Boundaries
- Urban Growth Boundaries

Notes:

1: 4,124



687.3 0 343.67 687.3 Feet

WGS_1984_Web_Mercator_Auxiliary_Sphere
Clark County, WA. GIS - <http://gis.clark.wa.gov>

This map was generated by Clark County's "MapsOnline" website. Clark County does not warrant the accuracy, reliability or timeliness of any information on this map, and shall not be held liable for losses caused by using this information.



Action Item E-4

Approve Lease Agreement between the Port of Vancouver USA and Vancouver Warehouse and Distribution Co., Inc.



SALES DEPARTMENT LEASE PROCESS

Staff reviews business opportunity including deal points, finances and site evaluation

Leadership review and approval of business opportunity

Lease deal points negotiation with tenant

Staff prepares draft lease documents

Lease document negotiation

Tenant signs final lease documents

Final approval and signatures

Implement lease changes, tracking, accounting and files





Exhibit "B" Site and Building Outline



Legend

- Cities Boundaries
- Urban Growth Boundaries

Notes:

395.5 0 197.74 395.5 Feet

WGS_1984_Web_Mercator_Auxiliary_Sphere
Clark County, WA. GIS - <http://gis.clark.wa.gov>

This map was generated by Clark County's "MapsOnline" website. Clark County does not warrant the accuracy, reliability or timeliness of any information on this map, and shall not be held liable for losses caused by using this information.



Action Item E-5

Approve Lease Agreement between the Port of Vancouver USA and Mark's Design and Metalworks, LLC



SALES DEPARTMENT LEASE PROCESS

Staff reviews business opportunity including deal points, finances and site evaluation

Leadership review and approval of business opportunity

Lease deal points negotiation with tenant

Staff prepares draft lease documents

Lease document negotiation

Tenant signs final lease documents

Final approval and signatures

Implement lease changes, tracking, accounting and files





Exhibit "A" Premises Within Port Property



Legend

Notes:

1,504.7 0 752.33 1,504.7 Feet

This map was generated by Clark County's "MapsOnline" website. Clark County is not responsible for the accuracy or timeliness of any information displayed on this map. Clark County is not liable for losses caused by

WGS_1984_Web_Mercator_Auxiliary_Sphere
Clark County, WA. GIS - <http://gis.clark.wa.gov>





Exhibit "B" Site and Building Outline



Legend

Notes:

376.2 0 188.08 376.2 Feet

WGS_1984_Web_Mercator_Auxiliary_Sphere
Clark County, WA. GIS - <http://gis.clark.wa.gov>

This map was generated by Clark County's "MapsOnline" website. Clark County does not warrant the accuracy, reliability or timeliness of any information on this map, and shall not be held liable for losses caused by using this information.



Action Item E-6

Approve Fuel Supplier Contract with
Wilcox & Flegel



Unfinished Business

PORT CONTRACTS LOGS



New Business



Accounts Payable



CEO Report

PROJECT UPDATES

STATE LEGISLATIVE PRIORITIES



Project Updates



Berth 2 Storm Sewer Realignment

CONTRACTOR: TAPANI UNDERGROUND



- Project 98% complete
- Punch list phase
- Improved Terminal 2 surface drainage



BL2400 Tenant Improvements

CONTRACTOR: HALBERT CONSTRUCTION

- Build out of ADA restroom
- Remodeling of office space
- Build out of demising wall for storage space



BL2400 Tenant Improvements

CONTRACTOR: HALBERT CONSTRUCTION

- Lighting & partial sprinkler head upgraded by port labor
- Project 85% complete
- Estimated 100% completion by February 14, 2020



Terminal 1 Ground Improvements

CONTRACTOR: HAYWARD BAKER

- Overall project 35% complete
- Port area 90% installed
- 25,000 cubic yards of material worked



Terminal 1 Ground Improvements

CONTRACTOR: HAYWARD BAKER



- Pile extraction work complete
- 690 wood piles removed
- Backfill of area under hotel complete



2019 Berth Repairs

CONTRACTOR: HICKEY MARINE CONSTRUCTION, INC.

- Project 95% complete
- Berth 7 repairs complete
- Berth 5 repairs 95% complete



2019 Berth Repairs

CONTRACTOR: HICKEY MARINE CONSTRUCTION, INC.



- Fender bumpers replaced
- Bracing repaired
- Fender assemblies straightened



State Legislative Priorities



CEO Report



Commissioners Reports



Upcoming Events

Next Commission Meeting

- Regular Commission Meeting – Tuesday, Feb. 11, 8:30 a.m.

Community Events

- 34th Annual Economic Forecast Breakfast – Thursday, Jan. 16, 7-9:30 a.m., Vancouver Hilton
- Dr. Martin Luther King Jr. Breakfast – Saturday, Jan. 18, 8-10:30 a.m., Warehouse '23
- Dr. Martin Luther King Jr. Day observed – Monday, Jan. 20, Port offices closed
- Northwest Neighborhood Association meeting – Thursday, Jan. 30, 7:00 p.m., Ben Franklin Elementary School
- Fruit Valley Neighborhood Association meeting – Thursday, Feb. 6, 6:30 p.m., Fruit Valley Community Center



Communicating with the Commission

- Share your thoughts during Open Forum, the public comment period for all regularly scheduled commission meetings.
- Email the commissioners at povcommissioners@portvanusa.com
- Speak to the commissioners by calling the port office at 360-693-3611 for specific contact information.
- Mail your comments to:
POV Board of Commissioners
3103 NW Lower River Road, Vancouver, WA 98660
- For more information, visit the port's website:
www.portvanusa.com



Port of Vancouver USA

3103 NW Lower River Road

Vancouver, WA 98660

info@portvanusa.com

360-693-3611



Workshop

STRATEGIC PLAN 2019 REPORT

